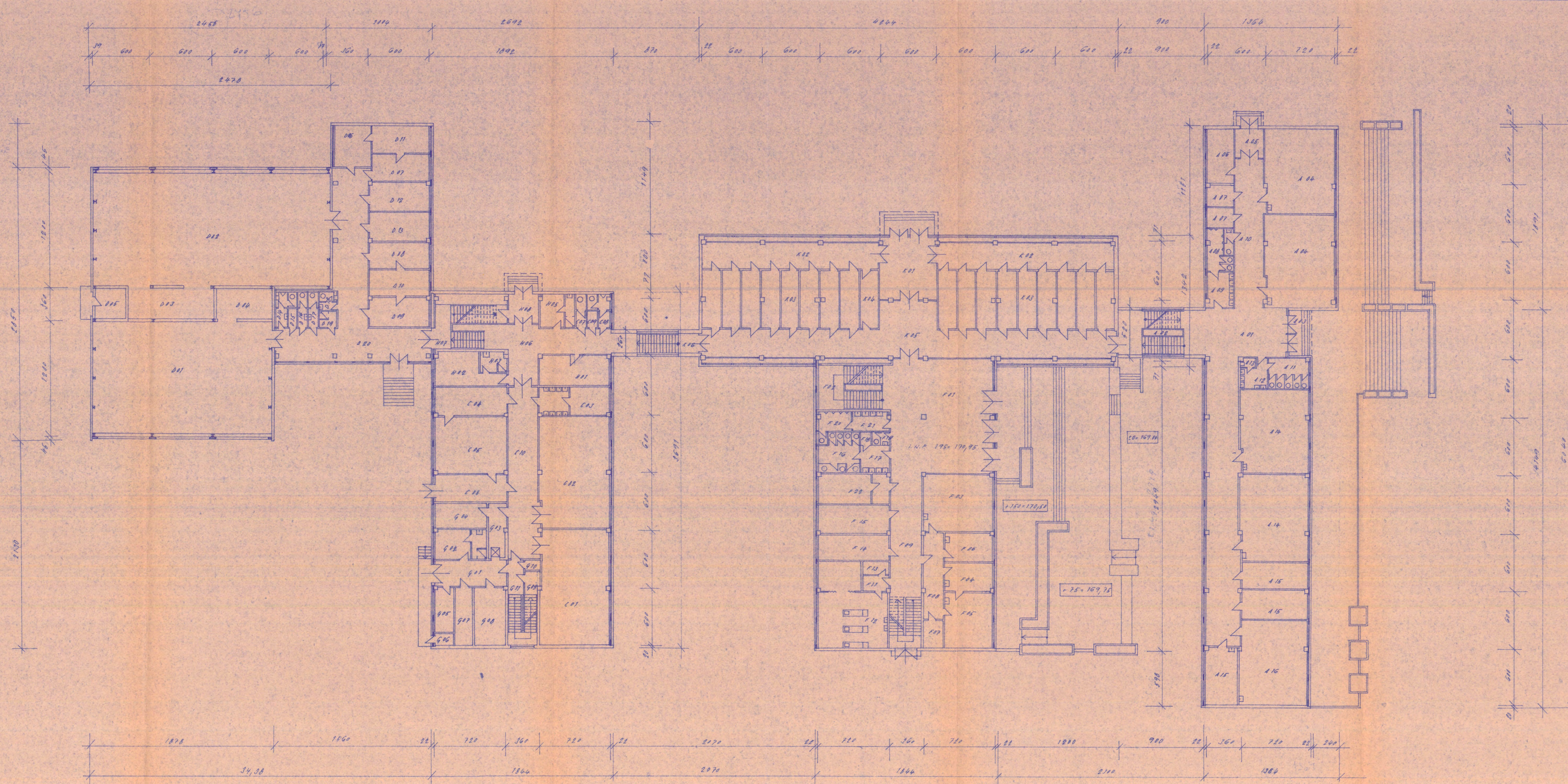


401	18180 C. 6	2,45	35% H ₂ O, 65% H ₂ O
402	18023, 18184	2,40	"
403	18111, 18018, 18016	2,40	40% H ₂ O, 60% H ₂ O
404	18112, 18017	2,40	35% H ₂ O, 65% H ₂ O
405	18014, 18015, 18013	2,40	40% H ₂ O, 60% H ₂ O
406	18010	2,40	"
407	18012, 18182	2,40	"
408	18180	2,40	40% H ₂ O, 60% H ₂ O



P01	PRŮSTÁVNOVÁ PLOCHA	551,11	
P02	" "	153,11	
P03	" "	314,11	

[illegible]